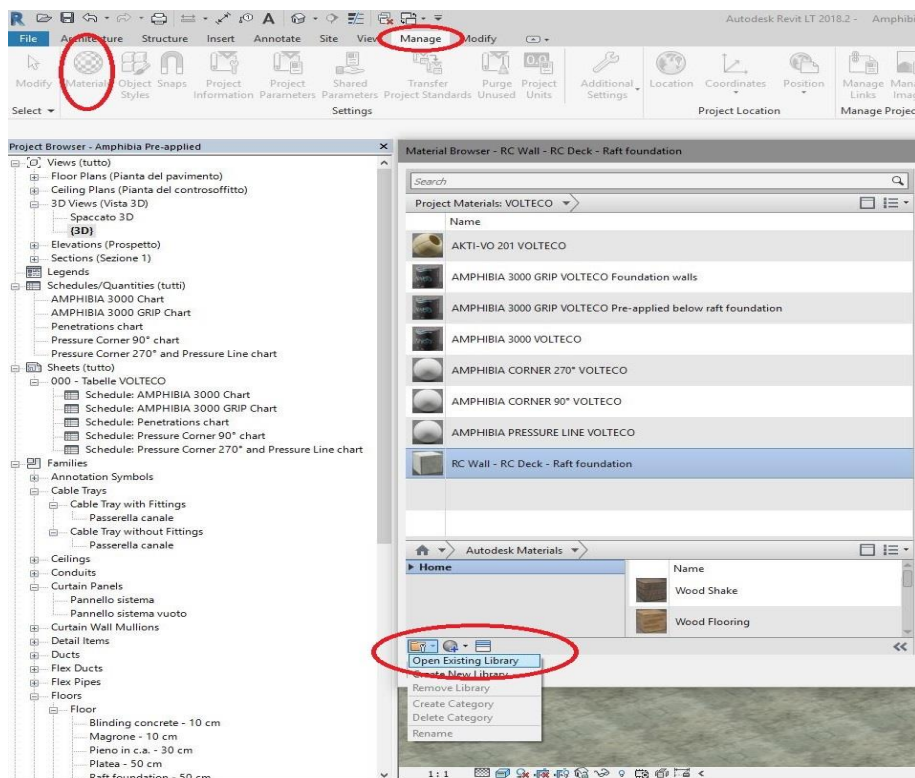


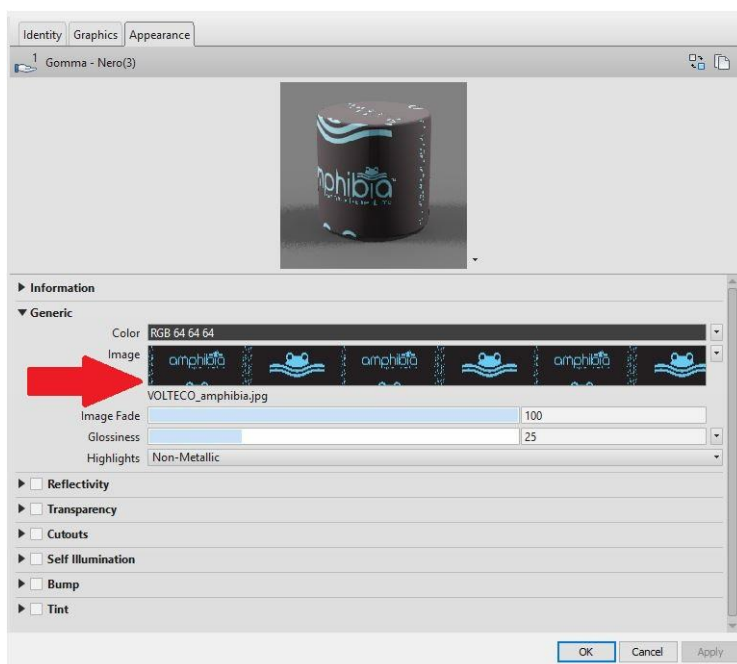
This proposed scheme (released only for example purposes) and its implementation must be assessed and approved by the Designer and the Construction Supervisor in relation to the specific issues of the project and the building site. More information about the application, performances and technical data of the technologies that we have here described must be obtained from the product datasheets (also freely downloadable from the website www.volteco.com); those datasheets are considered part of this document.

Operating instructions:

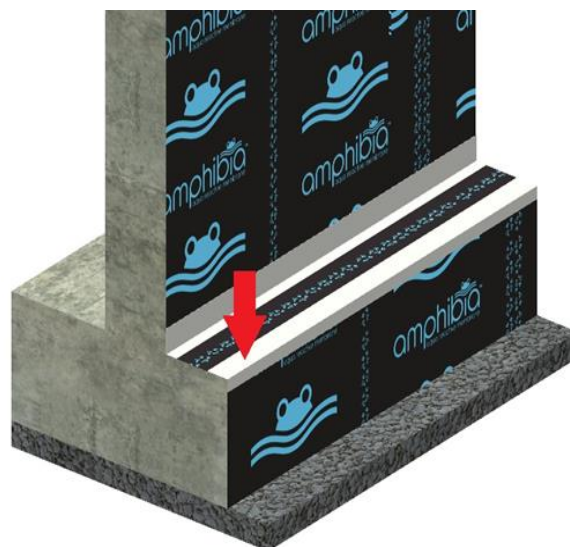
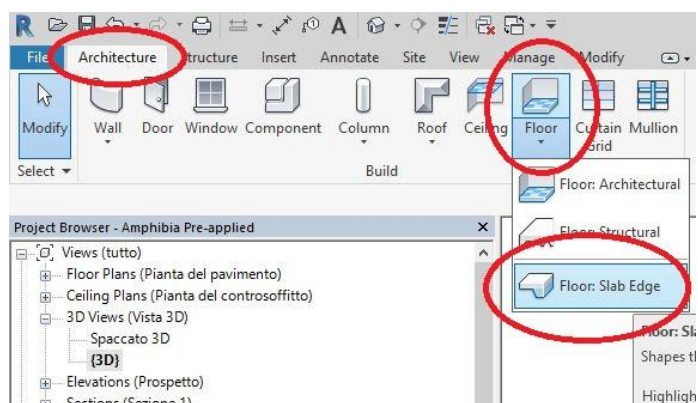
1. Load the material library called "Volteco Technologies" (format .adsklib)



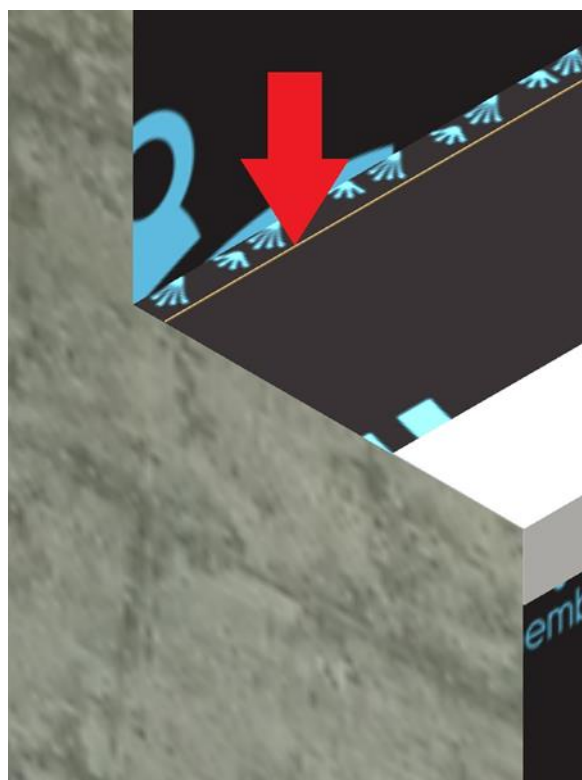
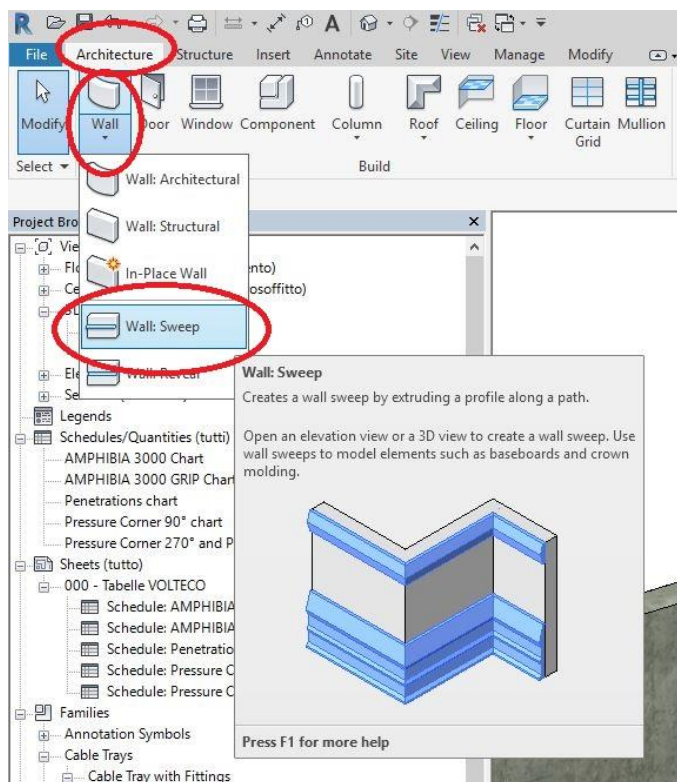
2. Load "VOLTECO amphibia" texture to define the appearance of Amphibia 3000 and Amphibia 3000 Grip technologies.



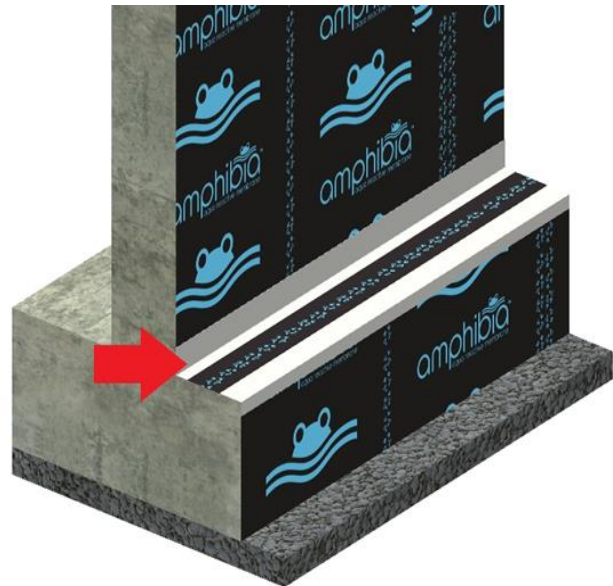
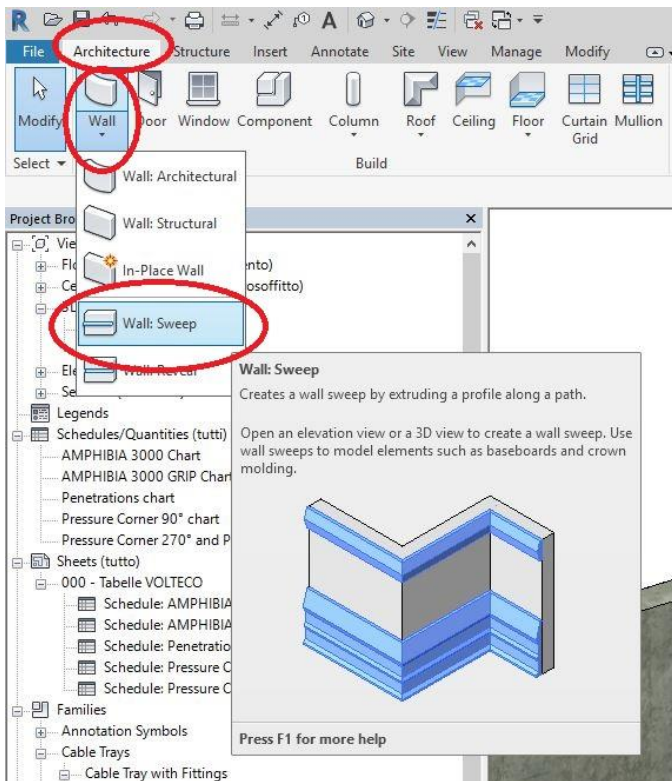
3. **AMPHIBIA PRESSURE CORNER 90°** has to be installed on the edge of the raft toe. Firstly you need to select "FLOOR: SLAB EDGE" command then click on the edge of the toe.



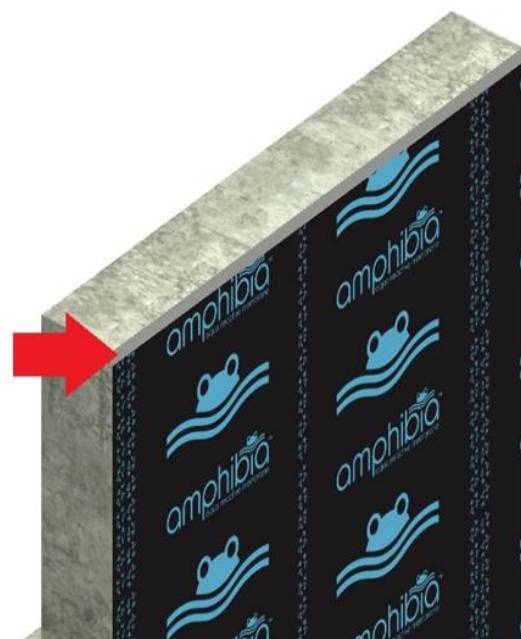
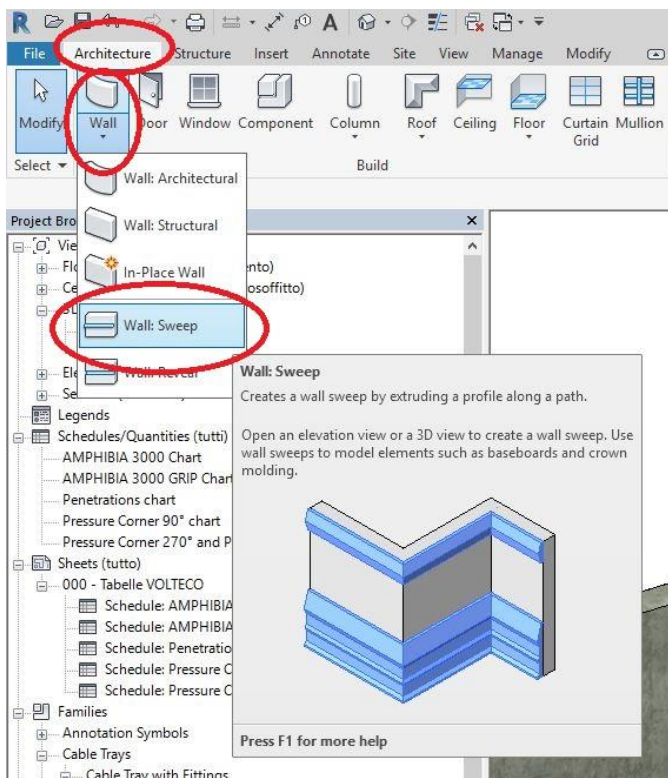
4. **AKTI-VO 201 UNDER AMPHIBIA PRESSURE CORNER 270 °** must be placed on the inner edge of the foundation slab, that one adjacent to the vertical wall. For a proper use of the tool, use the button "WALL: SWEEP", select the walls on which you want to paste the component after choosing it correctly from the REVIT device.



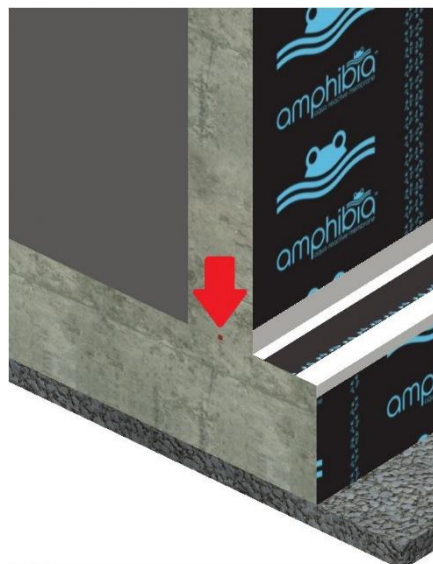
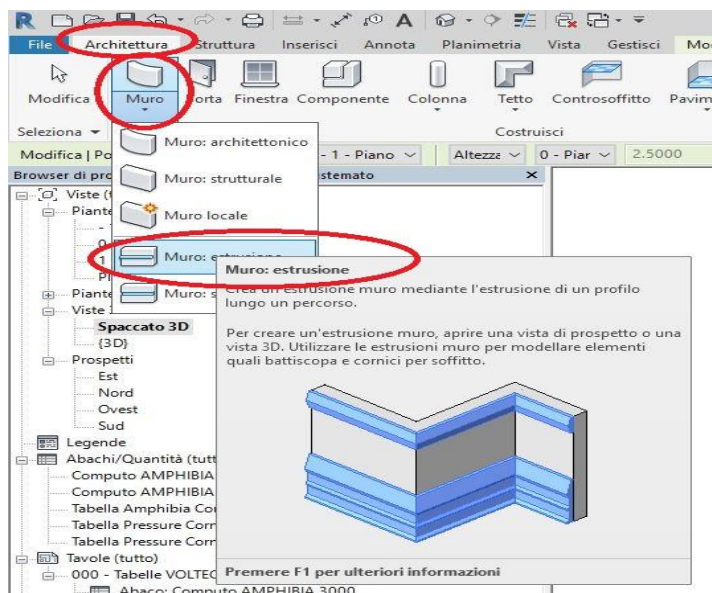
5. **AMPHIBIA PRESSURE CORNER 270°** has to be install on the raft all along the line of vertical formworks (in the building site the formworks will have to be set up over the pressure corner keeping its vertical part inside the building area in order to allow the overlapping with AMPHIBIA); you need to select the "WALL: SWEEP" command then select the affected walls after choosing this element.



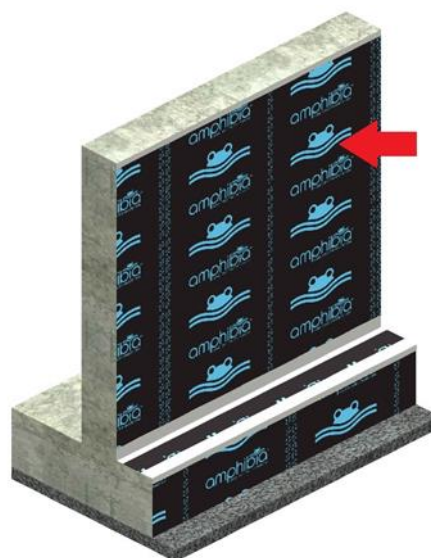
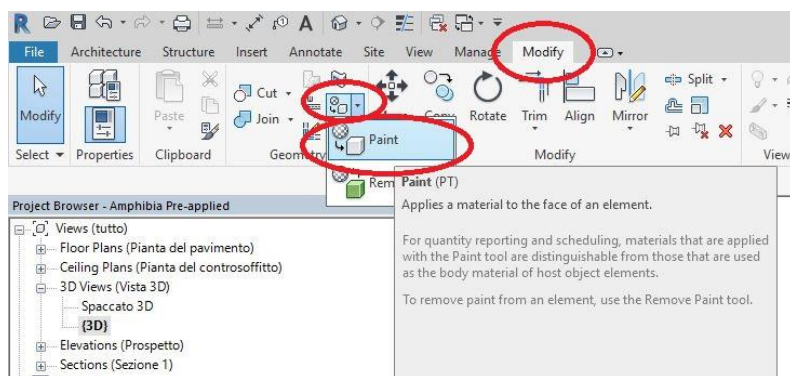
6. **AMPHIBIA 3000 STRIP** has to be installed on the top of the vertical wall; you need to use the "WALL: SWEEP" command and select the affected walls after choosing this element.



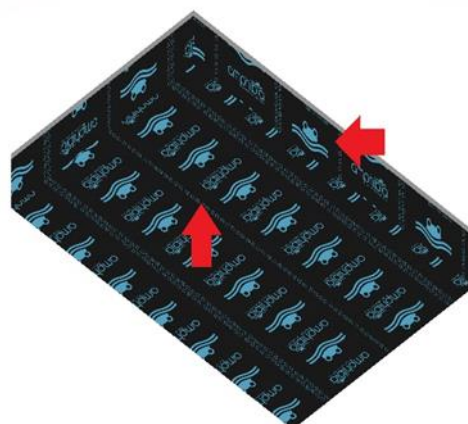
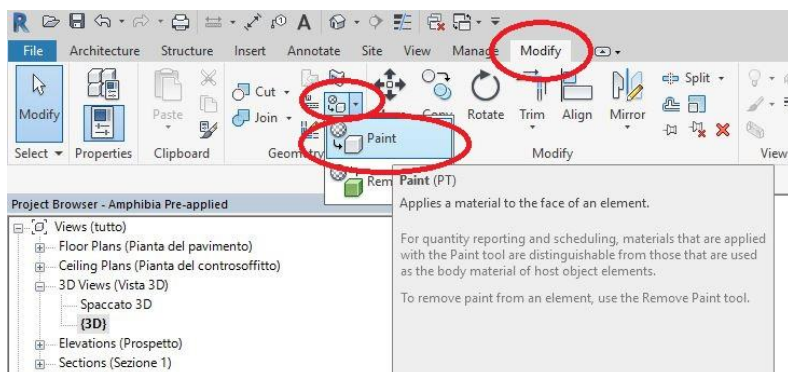
7. **WT102** is a hydro-expansive joint based on natural Sodium Bentonite optional, to apply as a secondary waterproof barrier, it must be applied on the middle of construction joints between the foundation and vertical wall and it must guarantee a minimum cover of 8 cm per side; For a proper functional response of the panel commands, the button "WALL: SWEEP", and select the walls on which to paste the component after choosing it correctly from the REVIT device.



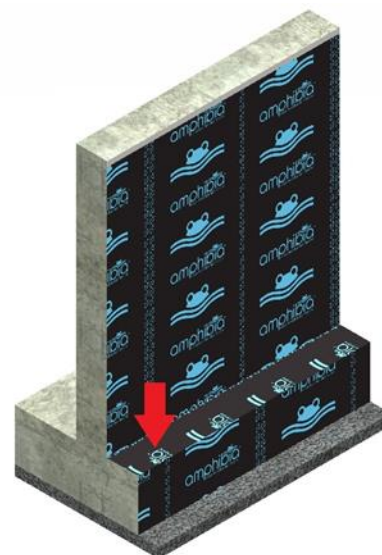
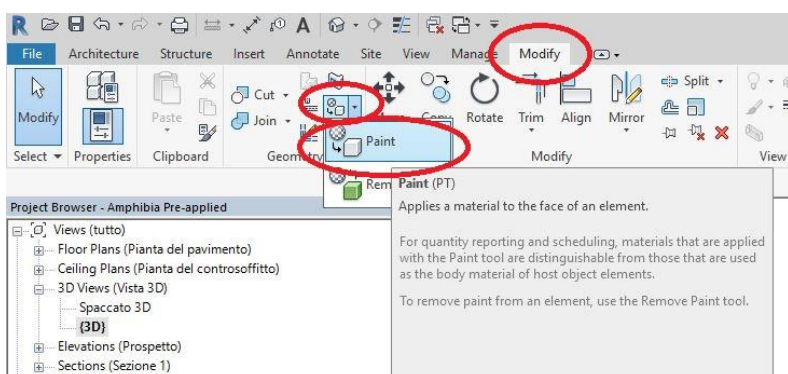
8. **AMPHIBIA 3000 GRIP "foundation walls"** has to be installed along the external surfaces of the foundation walls; for the application you need to install the "PAINT" command then select those surfaces.




9. **AMPHIBIA 3000 GRIP "below raft foundation"** has to be installed below the foundation slab and on its vertical surfaces all along the whole thickness; you need the "PAINT" command and select those surfaces.



10. **AMPHIBIA 3000** has to be installed horizontally on the raft toe; you need the "PAINT" command and select that surface.



11. In "AMPHIBIA 3000 GRIP" chart: insert the number 1 in the field "N° stopper per Square metre" in "AMPHIBIA 3000 GRIP VOLTECO foundation walls".

AMPHIBIA 3000 GRIP CHART							
							
A	B	C	D	E	F	G	H
Material	Description	Manufacture	Area	STOPPER (Yes/No)	Nr. STOPPER per mq	total Nr STOPPER	Safety Tape
AMPHIBIA 3000 GRIP VOLTECO Foundation walls							
AMPHIBIA 3000 GRIP VOLTECO Foundation walls	AMPHIBIA 3000 GRIP is a PRE-CAST	Volteco Spa	55.00 m²	<input checked="" type="checkbox"/>	1	55	49.50 m
AMPHIBIA 3000 GRIP VOLTECO Foundation walls	AMPHIBIA 3000 GRIP is a PRE-CAST	Volteco Spa	29.25 m²	<input checked="" type="checkbox"/>	1	29	26.33 m
AMPHIBIA 3000 GRIP VOLTECO Foundation walls	AMPHIBIA 3000 GRIP is a PRE-CAST	Volteco Spa	25.00 m²	<input checked="" type="checkbox"/>	1	25	22.50 m
AMPHIBIA 3000 GRIP VOLTECO Foundation walls	AMPHIBIA 3000 GRIP is a PRE-CAST	Volteco Spa	22.43 m²	<input checked="" type="checkbox"/>	1	22	20.19 m
AMPHIBIA 3000 GRIP VOLTECO Foundation walls	AMPHIBIA 3000 GRIP is a PRE-CAST	Volteco Spa	29.18 m²	<input checked="" type="checkbox"/>	1	29	26.26 m
AMPHIBIA 3000 GRIP VOLTECO Foundation walls	AMPHIBIA 3000 GRIP is a PRE-CAST	Volteco Spa	51.00 m²	<input checked="" type="checkbox"/>	1	51	45.90 m
			211.86 m²			211	190.67 m
AMPHIBIA 3000 GRIP VOLTECO Pre-applied below raft foundation							
AMPHIBIA 3000 GRIP VOLTECO Pre-applied below ra	AMPHIBIA 3000 GRIP is a PRE-CAST	Volteco Spa	442.36 m²	<input type="checkbox"/>			398.12 m
AMPHIBIA 3000 GRIP VOLTECO Pre-applied below ra	AMPHIBIA 3000 GRIP is a PRE-CAST	Volteco Spa	0.97 m²	<input type="checkbox"/>			0.88 m
AMPHIBIA 3000 GRIP VOLTECO Pre-applied below ra	AMPHIBIA 3000 GRIP is a PRE-CAST	Volteco Spa	0.97 m²	<input type="checkbox"/>			0.88 m
			444.31 m²			0	399.88 m

PLEASE NOTE: The waterproofing systems must be installed continuously all along the whole structure subjected to intervention and up till the ground level, keeping the continuity between all waterproofed surfaces, horizontal and vertical; any kind of joint, penetration and every possible crack must be sealed with suitable VOLTECO systems, applied in continuity with one another (see VOLTECO technical data sheets), in order to avoid any chance of seepage. The structures must be suitable to withstand hydraulic pressures and every kind of load that they will undergo.